

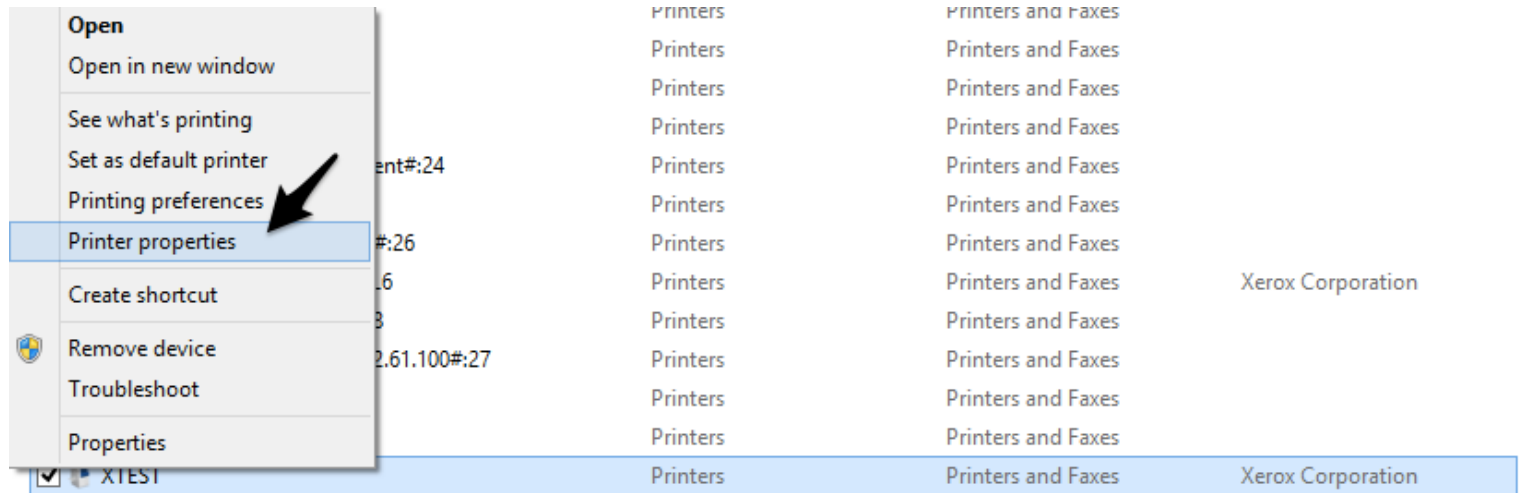
Xerox ConnectKey Print Driver configurations

This documentation will provide screenshots/instructions on how to setup the Xerox ConnectKey printer queue for the following:

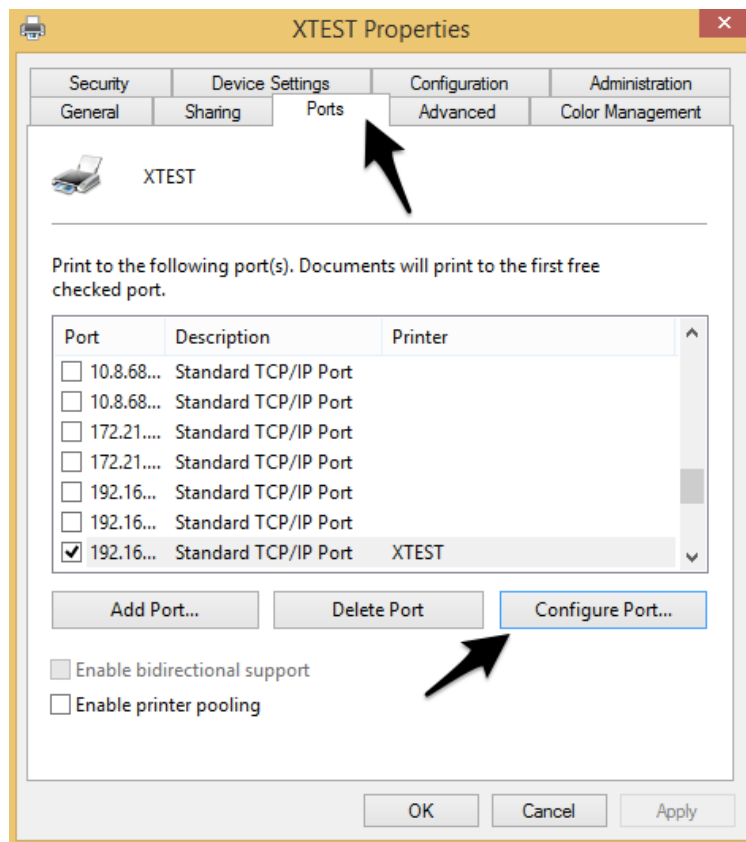
- *Default to 1-sided and B/W* **(First, ask decision maker whether to default to Color or B/W).**
- *Recommendation on how to optimize for print speed*

These screenshots/instructions apply to the Xerox ConnectKey (CK) print queues, after the driver has been downloaded, extracted, and installed on a server in a server-client environment, or on the client itself if installed in a peer-peer environment, with no print server. These may require administrative rights.

Right click on the printer queue (in this case XTEST) and go to **printer properties**



Click on the Ports Tab and then click on configure port



Change the Protocol from RAW to **LPR**, set the Queue Name to **'lp'** (lowercase LP), and **uncheck both LPR Byte Counting** and **SNMP Status**, if either one are checked (in some cases both may be checked or one or the other). Click OK.

Configure Standard TCP/IP Port Monitor

Port Settings

Port Name: 192.168.1.100

Printer Name or IP Address: 192.168.1.100

Protocol

☐ Raw ☒ LPR

Raw Settings

Port Number: 515

LPR Settings

Queue Name: lp

☐ LPR Byte Counting Enabled

☐ SNMP Status Enabled

Community Name: public

SNMP Device Index: 1

OK Cancel

While still in printer properties of the print queue, click on the **Advanced Tab** then **Printing Defaults**

XTEST Properties

Security Device Settings Configuration Administration

General Sharing Ports Advanced Color Management

☒ Always available

☐ Available from 12:00 AM To 12:00 AM

Priority: 1

Driver: Xerox WorkCentre 7855 PCL6 New Driver...

☒ Spool print documents so program finishes printing faster

☐ Start printing after last page is spooled

☒ Start printing immediately

☐ Print directly to the printer

☐ Hold mismatched documents

☒ Print spooled documents first

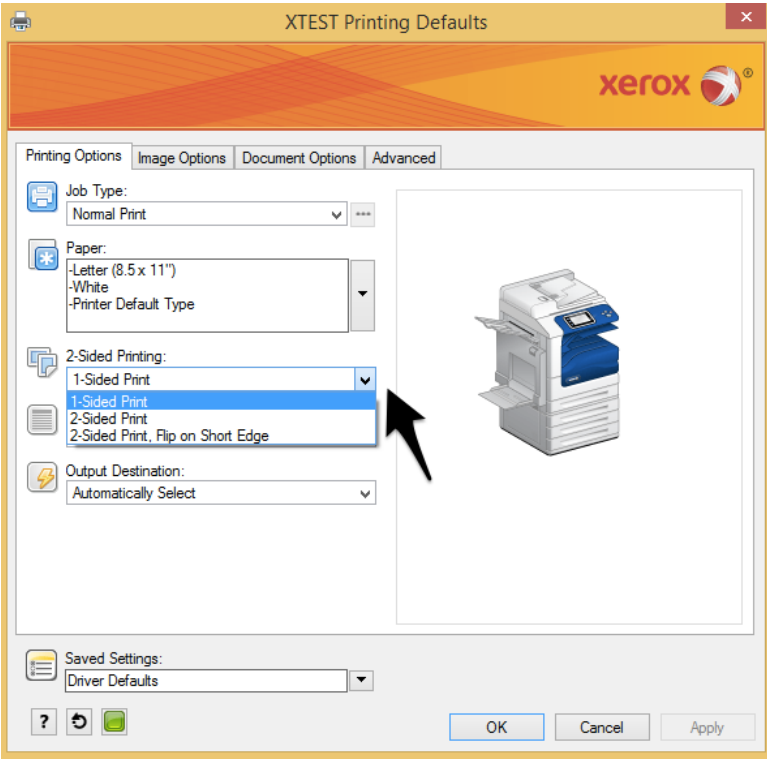
☐ Keep printed documents

☒ Enable advanced printing features

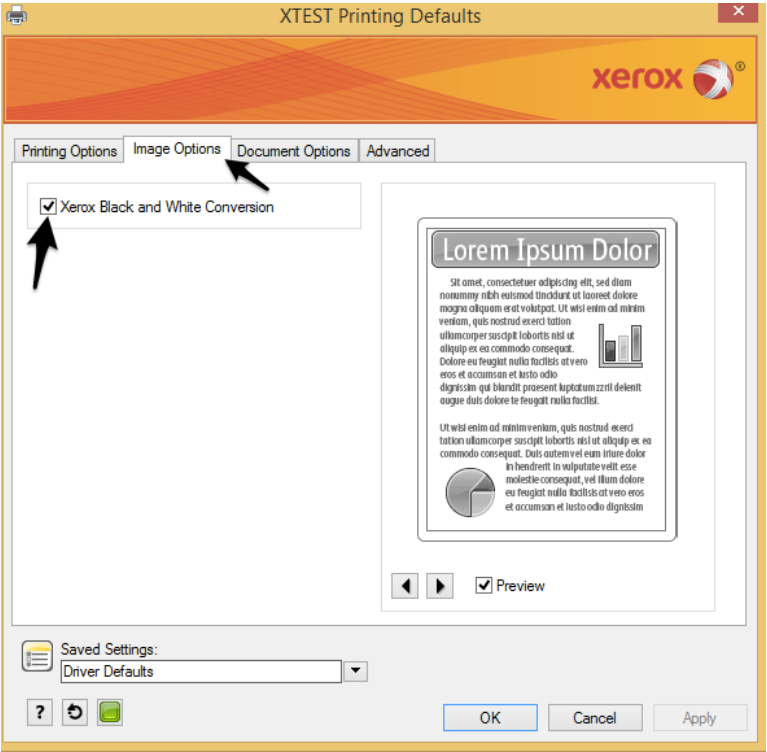
Printing Defaults... Print Processor... Separator Page...

OK Cancel Apply

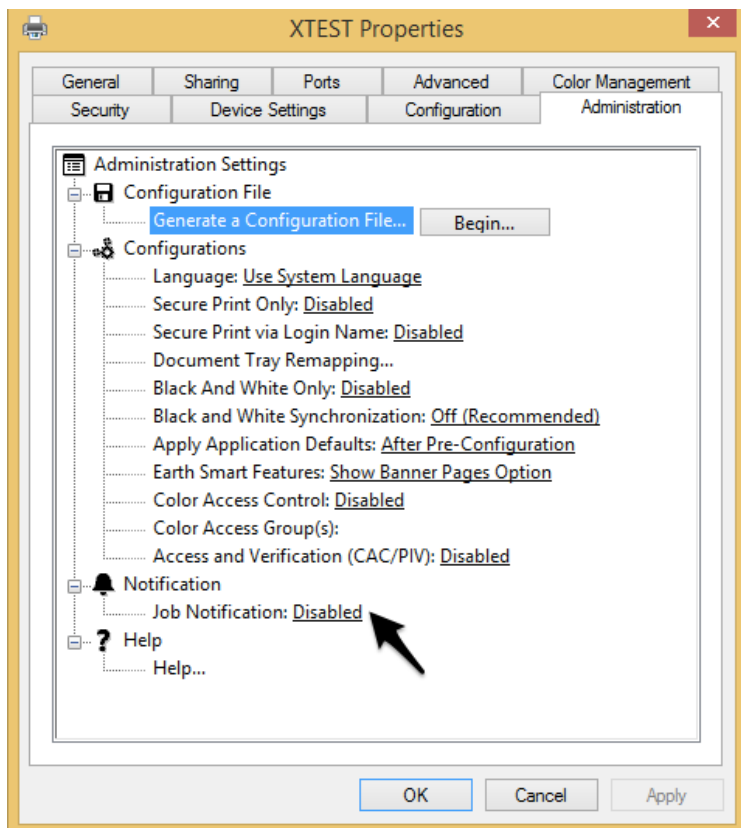
In the **Printing Options** Tab, change from 2-Sided Printing to **1-Sided** Printing and click OK.



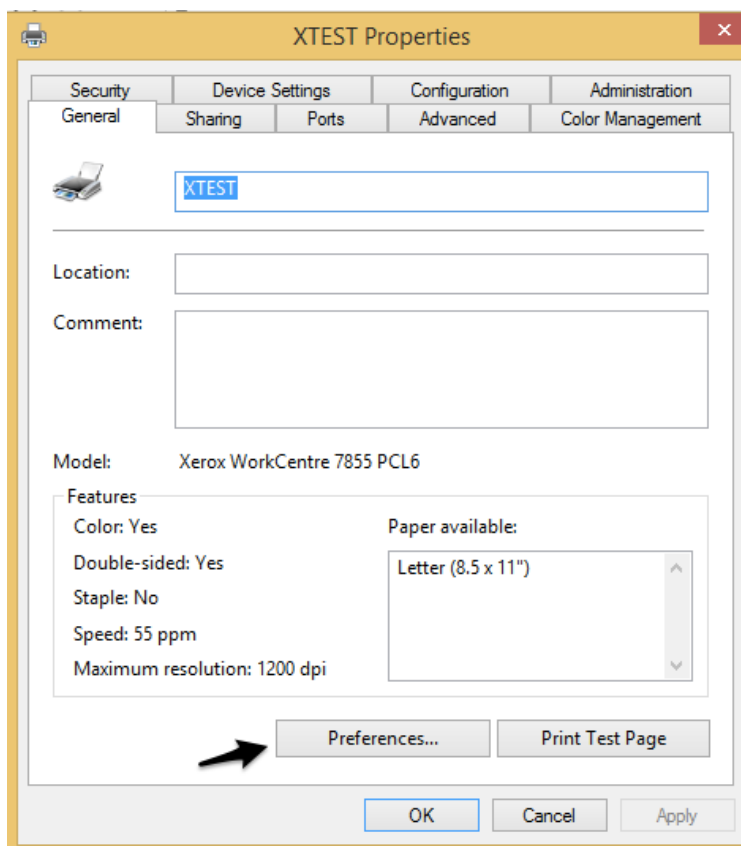
While still in the Printing Defaults screen, now click over to the Image Options Tab. Enable Xerox Black and White Conversion. Enabling this checkbox defaults the printer queue to default prints in B/W. Click Apply and OK.



While still in printer properties of the print queue, click on the **Administration tab**. **Disable Job Notification**. Click OK.



Right click on the printer queue again (in this case XTEST) and go to printer properties. Within the General tab, click on Preferences.



Here we are only verifying that the defaults we made under the Printer properties > Advanced > Printing Defaults carried over for 1/sided and B/W. Once verified > select Print a Test Page.