



Office of the Vice President
and Chief Financial Officer

Procurement Services

<https://procurement.ufl.edu/>

971 Elmore Drive
PO Box 115250
Gainesville, FL 32611-5250
(352) 392-1331 Fax 352-392-8837

October 1, 2021

Industry Day Addendum #2 to the University of Florida ITN22LD-112 Central Energy Plant Project (UF-623) (the "ITN") scheduled to be opened on November 10, 2021 at 2:00 pm at the University of Florida, Elmore Hall Conference Room, Radio Road, Gainesville, Florida.

This Industry day Addendum #2 shall be considered part of the Contract Documents for the above mentioned **ITN22LD-112** as though it had been issued at the same time and incorporated integrally therewith. Where provisions of this Industry Day Addendum #2 differ from those of the ITN, the ITN shall govern and take precedence. All other terms, conditions, and regulations will apply.

This addendum consists of:

- 1). Industry Day Participant list
- 2) PowerPoint slides from Industry Day which are also on the Procurement Website <https://procurement.ufl.edu/vendors/schedule-of-bids/> see the link to Industry Day Slides

Sincerely,

A handwritten signature in black ink, appearing to read "Lisa Deal", written over a horizontal line.

Lisa Deal

Asst. Vice President & Chief Procurement Officer

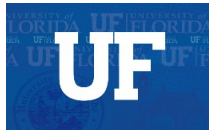
Please acknowledge receipt of this Industry Day Addendum #2 by signing below and returning this Industry Day Addendum #2 with your SOQ. Failure to include addendum with your proposal may result in rejection.

Signature

Company Name

Company Address

City/State/Zip



**University of Florida
Central Energy Plant Project
Industry Day Participants**

First Name	Last Name	Company	Email
Scott	Robinson	AEI - Affiliated Engineers, Inc.	srobinson@aeieng.com
Amrinder	Saini	Agentis Capital	amrinder.saini@agentis.ca
Nabid	Islam	Agentis Capital	nabid.islam@agentis.ca
Roger	Boothe	Altus Group	roger.boothe@altusgroup.com
Nicole	Bulgarino	Ameresco	nbulgarino@ameresco.com
Gregory	Caplan	Ameresco	gregcaplan@gmail.com
Sean	McDougle	Ameresco, Inc.	spmcdougle@gmail.com
Scott	Shelton	Austin Commercial	sshelton@austin-ind.com
david	Yeagy	Austin Commercial	dyeagy@austin-ind.com
Thomas	Parker	B&M	tfparker@burnsmcd.com
Haley	Smith	Balfour Beatty	hsmith@balfourbeattyus.com
Sandra	Drain	Balfour Beatty	sdrain@bbcgrp.com
John	Harris	Balfour Beatty	jharris@bbus.com
Bruce	Capon	Balfour Beatty	bcapon@bbus.com
Willis	Milner	Balfour Beatty	wmilner@bbus.com
Josh	Smith	Balfour Beatty Campus Solutions	jsmith@bbcgrp.com
Bob	Shepko	Balfour Beatty Campus Solutions	rshepko@bbcgrp.com
Michael	Carlin	Balfour Beatty Construction	mcarlin@balfourbeattyus.com
Sarah	Carmany	Balfour Beatty Construction	scarmany@balfourbeattyus.com
Allison	Ricotta	Balfour Beatty US	aricotta@balfourbeattyus.com
Katie	Leesman	Ballard Spahr LLP	leesmank@ballardspahr.com
Mark	Moore	BAM PPP	mark.moore@bam.com
Aaron	Powers	Barclays	aaron.powers@barclays.com
Jack	Miller	Barclays	jack.miller2@barclays.com
Ari	Katz	Barclays	ari.katz@barclays.com
Jeffrey	Mathews	Barclays	jeffrey.mathews@barclays.com
Michal	Grabias	Barclays	michal.grabias@barclays.com
Chris	Aventuro	Barclays Capital	chris.aventuro@barclays.com
Frank	Ferramosca	Bernhard	fferramosca@bernhard.com
David	Krauss	Bernhard	dkrauss@bernhard.com
Jeffrey	Swann	Bernhard, LLC	jswann@bernhard.com
Ian	O'Leary	Black & Veatch	olearyi@bv.com
Adam	Gentzel	BofA Securities	adam.gentzel@bofa.com
Nicole	Buxton	Bond Building Construction, Inc.	nbuxton@bond-building.com
Jon	Schwartz	Burns & McDonnell	jschwartz@burnsmcd.com
Bruno	Fiorentino	Burns Engineering	bfiorentinob@urns-group.com
Diego	Mandelbaum	CE	diego@creative.energy
Santanu	Khan	CentTrio	santanu.khan@centrioenergy.com
Tyler	Brake	CentTrio Energy LLC	tyler.brake@centrioenergy.com
paul	VanGelder	CHA Consulting LLP	pvangelder@chacompanies.com
Jason	Hutchins	CHA Consulting, Inc.	jhutchins@chacompanies.com
Mark	Cutshaw	Chesapeake Utilities Corporation	mcutshaw@chpk.com
Tim	Johnston	clearway community energy	tim.johnston@clearwayenergy.com
Wayne	Barnett	Clearway Community Energy	wayne.barnett@clearwayenergy.com

Alec	Goetz	Clearway Community Energy Development, LLC	alec.goetz@clearwayenergy.com
Sameer	Qureshi	Clearway Energy	sameer.qureshi@clearwayenergy.com
Mark	Schneider	Clearway Energy	mark.schneider@clearwayenergy.com
Kristi	Vilminot	Commonwealth Associates	kristi.vilminot@cai-engr.com
Jacob	Brigham	Commonwealth Associates Inc.	jacob.brigham@cai-engr.com
Matt	Iadipaolo	Commonwealth Associates, Inc.	matt.iadipaolo@cai-engr.com
Tom	Batten	Concord	tbatten@concord-engineering.com
Michael	Fischette	Concord Engineering Group Inc	mfischette@concord-engineering.com
Michael	Boswell	Concord Engineering Group, Inc.	mboswell@concord-engineering.com
Steven	Fance	Cultiv8	steven.fance@cultiv8hs.com
Robert	Wage	dbHMS	rwage@dbhms.com
Jonathan	Wohl	DCO Energy, LLC	jwohl@dcoenergy.com
Richard	Humphries	DTE Energy Services	richard.humphries@dteenergy.com
Steve	Marchigiano	Duke Energy	steve.marchigiano@duke-energy.com
Doug	Voda	Duke Energy	douglas.voda@duke-energy.com
Matthew	Boone	Duke Energy	matthew.boone@duke-energy.com
DAVID	MOREL	Duke Energy	david.morel@duke-energy.com
Robert	Mango	Duke Energy	robert.mango@duke-energy.com
Bruce	Wittbrodt	Duke Energy	bruce.wittbrodt@duke-energy.com
DAVID	CAMPBELL	Duke Energy Sustainable Soluti	david.campbell2@duke-energy.com
Brittani	White	Duke Energy Sustainable Solutions	brittani.white@duke-energy.com
Helen	Beer	Duke Energy Sustainable Solutions	helen.beer@duke-energy.com
Leslie	Lynch	ENGIE	leslie.lynch@engie.com
Andres	Arbizu	ENGIE	andres.arbizu@engie.com
Sal	Baassiri	Engie	salah.baassiri@engie.com
Dawn	Johnson	ENGIE	dawn.johnson@engie.com
Carlos	Campo	ENGIE	carlos.campo@engie.com
Layne	Toops	ENGIE	layne.toops@engie.com
Todd	Kellenbenz	ENGIE N.A.	todd.kellenbenz@engie.com
Brittany	Lopez	ENGIE North America	brittany.lopez@engie.com
Gorden	Goodman	Engineering Design Technologies	gorden.goodman@edtinc.net
Mark	Macchia	Enwave	mark.macchia@enwave.com
Raam	Pandey	Enwave Energy	raam.pandey@enwave.com
Shannon	Horton	Fengate Asset Management	shannon.horton@fengate.com
Colin	Peppard	Fengate Asset Management	colin.peppard@fengate.com
Jensen	Clarke	Fengate Real Asset Investments	jensen.clarke@fengate.com
Renee	Bush	First Choice Management Services, Inc	renee.bush@1stchoicems.com
Nicholas	Sorenson	First Sentier Investors	nicholas.sorenson@firstsentier.com
Thomas	Brown	Gainesville Regional Utilities	browntr@gru.com
Andrew	Morton	GE	andrew1.morton@ge.com
Max	Skudarnov	Generate Capital	max.skudarnov@generatecapital.com
Davis	Mullins	Gilbane Building Company	dmullins@gilbaneco.com
Diana	Hoadley	Goldman Sachs	diana.hoadley@gs.com
Stephen	Fortino	Goldman Sachs	stephen.fortino@gs.com
Peyton	Dunham	Goldman Sachs	peyton.dunham@gs.com
John	Stevenson	Goldman Sachs	john.stevenson@gs.com
Christopher	Elmore	Goldman Sachs & Co. LLC	chris.elmore@gs.com
Jordan	Poteat	Gray And Associates Inc.	jp@gray-hvac.com
Chuck	Heidt	GRU	heidtcs@gru.com
Jamie	Verschage	GRU	verschagejb@gru.com
b	g	gs	bg@gs.com
vanessa	eckert	GS	vanessa.eckert@gs.com
Kaitlin	Monson	GS	kaitlin.monson@gs.com
Kana	White	GS	kana.white@gs.com
Bob	Johnson	Hannon Armstrong	rjohnson@hannonarmstrong.com

John	Hopkins	Harrison Street	jhopkins@harrisonst.com
Daughan	Pitts	Hayat Brown	daughan.pitts@hayatbrown.com
Jay	Brown	Hayat Brown LLC	jay.brown@hayatbrown.com
Kurt	Koenig	HDR	kurt.koenig@hdrinc.com
Andrew	Sutherland	HDR	andrew.sutherland@hdrinc.com
Terri	Poussard	HDR	terri.poussard@hdrinc.com
Michael	Newman	Hilltop Securities Inc	michael.newman@hilltopsecurities.com
Peter	Belmonte	HMI Technical Services	pbelmonte@hmiservices.com
Kevin	Radvany	HMI Technical Solutions	kradvany@hmiservices.com
Brian	Ast	Honeywell	brian.ast@honeywell.com
Alfred	Guerrero	Honeywell International, Inc.	alfred.guerrero@honeywell.com
Barry	Beck	I. C. Thomasson Associates, Inc.	bbeck@icthomasson.com
Brian	Miller	I.C. Thomasson Associates, Inc.	bmiller@icthomasson.com
Will	Frymann	J.P. Morgan	will.frymann@jpmorgan.com
Jen	Jabs	J.P. Morgan	jen.jabs@jpmorgan.com
Jason	Gredell	J.P. Morgan	jason.gredell@jpmorgan.com
Nicolas	Salas	J.P. Morgan	nicolas.munozsalas@jpmorgan.com
Vincent	Clarke	J.P. Morgan	vincent.clarke@jpmorgan.com
Patrick	Eddy	Jacobs	patrick.eddy@jacobs.com
Kevin	Fox	Jacobs	kevin.fox@jacobs.com
Fraser	Ringel	Jacobs Engineering	fraser.ringel@jacobs.com
Charles	Gableman	JLRD Consulting Engineers	cgableman@jlrddinc.com
Timothy	Feagans	JLRD Engineers	tfeagans@jlrddinc.com
Huan	Liu	John Laing	huan.liu@laing.com
Andre	Chusan	John Laing	andre.chusan@laing.com
Justin	Newbern	Johnson Controls, Inc.	justin.m.newbern@jci.com
Mark	Widener	JP Morgan	mark.widener@jpmorgan.com
Casey	Bush	KBCM	casey.bush@key.com
Justin	Schwartz	Kepler Energy	schwartz@kepler-energy.com
Sunny	Singh	Key Solutions Inc.	ssingh@ksiadvantage.com
Richard	Foster	KeyBanc Capital Markets	richard.foster@key.com
Stephen	Hill	KeyBanc Capital Markets	stephen.hill@key.com
Richard	Foster	KeyBanc Capital Markets	rsfoster11@gmail.com
Steve	Schmitt	Kiewit	steve.schmitt@kiewit.com
Jonathan	Howard	Kindle Energy LLC	jonathan.howard@kindle-energy.com
Paul	Compton	Mastec	paul.compton@mastec.com
Sarah	Duggan	MasTec	sarah.duggan@mastec.com
Lee	Hicks	MasTec Power	lee.hicks@mastec.com
Michael	DonMoyer	MasTec Power Corp	michael.donmoyer@mastec.com
Tracey	Gallentine	McKim & Creed	tgallentine@mckimcreed.com
William	Greek	McKinstry	billgr@mckinstry.com
Stacey	Ayuthia	Meridiam	s.ayuthia@meridiam.com
Antoine	Nothias	Meridiam	a.nothias@meridiam.com
Emre	Erkovan	Meridiam	e.erkovan@meridiam.com
Theophile	Garnier	Meridiam Infrastructure	t.garnier@meridiam.com
Arlene	Douglas	Meridiam North America	a.douglas@meridiam.com
Jeff	Rayis	Michigan State University	jrayis@msu.edu
DANA	PETRIN	NAES Corporation	dana.petrin@naes.com
Frank	Huston	NAES Corporation	frank.huston@naes.com
Rajas	Nimbarte	NEER	rxn0hzx@fpl.com
Rajas	Nimbarte	NEER	rajas.nimbarte@nee.com
Adam	SCHIFF	NextEra Energy	adam.schiff@nee.com
Joan	Kowal	NextEra Energy Resources	joan.kowal@nexteraenergy.com
Rory	Spangler	NextEra Energy Resources	rory.spangler@nexteraenergy.com
Joseph	Matteo	NextEra Energy Resources	joseph.matteo@nexteraenergy.com

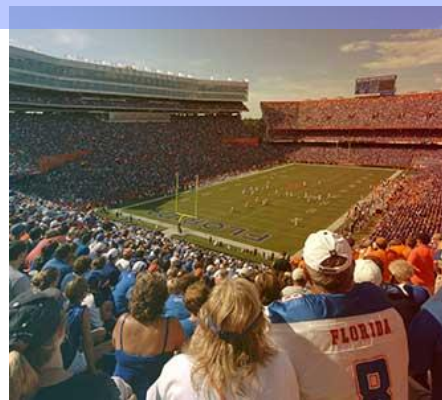
David	Braslau	NORESCO	dbraslau@noresco.com
Jessica	Newfell	NORESCO	jnewfell@noresco.com
Michael	Azzara	NORESCO	mazzara@noresco.com
Tracie	Lampton	NORESCO	tlampton@noresco.com
Randall	Clark	NORESCO	rclark@noresco.com
Michael	Roberti	NORESCO	mroberti@noresco.com
Charles	Dorr	PCL Construction	cdorr@pcl.com
Ritch	MacPherson	PCL Construction Services	ramacpherson@pcl.com
Laura	Roberts	Performance Management Group, Inc.	lroberts@p-m-g-i.com
Chris	Lover	PFM	loverc@pfm.com
David	Creech	Plant N Power	david.creech@iss-na.com
Christopher	Hargrove	Plant N Power, Inc	christopher.hargrove@iss-na.com
Lauren	Yates	Plenary Americas	lauren.yates@plenarygroup.com
Morgan	Crowder	Plenary Americas	morgan.crowder@plenarygroup.com
Mike	Kuratczyk	Rbc	mike.kuratczyk@rbccm.com
Brian	Roche	RBUS, LLC	brianroche1219@gmail.com
Richard	Borkowicz	RMF Engineering	rick.borkowicz@rmf.com
Amanda	Kerley	RMF Engineering	amanda.kerley@rmf.com
Elizabeth	Nolder	RMF Engineering	elizabeth.nolder@rmf.com
John	Williamson	RMF Engineering, Inc.	john.williamson@rmf.com
Marcos	Boto	Sacyr	mboto@sacyr.com
JOSE	CAPARROS	SACYR	jcparros@sacyr.com
Raul	Perez	Sacyr Concesiones	rperezl@sacyr.com
Maria	Lopez Nalda	Sacyr Concesiones	mlopezn@sacyr.com
Carlos	Berriochoa	Sacyr Concesiones	cberriochoa@sacyr.com
Manuel	Sigüenza	Sacyr Concessions	msiguenza@sacyr.com
matthew	snyder	Sacyr Construction	msnyder@sacyr.com
Sandra	Tique	Sacyr Construction USA LLC	stique@sacyr.com
Ricardo	Escorihuela	Sacyr Infrastructure	rescorihuela@sacyr.com
Matteo	Colasuonno	Sacyr USA	mcolasuonno@sacyr.com
Gregg	Eaton	Siemens	gregg.eaton@siemens.com
Marc	Craddock	Siemens	marc.craddock@siemens.com
Todd	ThurLOW	Siemens	todd.thurLOW@siemens.com
Jason	Thompson	Siemens	jason.thompson@siemens.com
Dean	Gakos	Siemens	dean.gakos@siemens.com
John	Lindstrom	Siemens Energy	john.lindstrom@siemens-energy.com
Iftikhar	Raisuddin	Siemens Financial	iftikhar.raisuddin@siemens.com
Kevin	Kingston	Siemens Financial Services	kevin.kingston@siemens.com
Stefanie	Hadolt	Societe Generale	stefanie.hadolt@sgcib.com
Don	Dyches	Southeast Industrial Sales Company	don.dyches@siscosales.com
Tom	Lothspeich	Stanley Consultants	lothspeichtom@stanleygroup.com
Andy	Ungerman	Stanley Consultants	ungermanandy@stanleygroup.com
Mathew	Roling	Stanley Consultants	rolingmathew@stanleygroup.com
Chris	DePodesta	Stanley Consultants, Inc.	depodestachris@stanleygroup.com
Josh	Klopp	Stanley Consultants, Inc.	kloppjosh@stanleygroup.com
matthew	aloi	Star America	maloi@starinfrapartners.com
Jahred	Kallop	Star America Infrastructure Partners	jkallop@starinfrapartners.com
Sean	Dowd	Star America Infrastructure Partners	sdowd@starinfrapartners.com
Warren	Carsey	Sustainability Partners	wcarsey@s.partners
Alexandra	Harris	The Independent Florida Alligator	aharris@alligator.org
Emily	Kessinger	The Weitz Company	emily.kessinger@weitz.com
Paul	Humbert	Tower Engineering	paul@tei-usa.com
Kara	Axx	Uaf	kaaxx@alaska.edu
Lisa	Deal	UF	lsd@ufl.edu
Bruce	Tangeman	University of Alaska - Fairbanks	bruce@tangemanco.com

Kellie	Fritze	University of Alaska Fairbanks	kfritze@alaska.edu
Dante	Reyes	University of Florida	dantereyes@ufl.edu
Mark	Helms	University of Florida	markhelms@ufl.edu
Gregg	Clarke	University of Florida	gclarke@ufl.edu
Bryan	Bullett	University of Florida	bbullett@ufl.edu
HOLLY	XIN	University of Florida	holly.xin@ufl.edu
Robert	Muir	University of Utah	robert.muir@admin.utah.edu
Mike	Perez	Vanderbilt University	michael.g.perez@vanderbilt.edu
Trey	Beasley	Vanderbilt University	trey.a.beasley@vanderbilt.edu
eric	Bymaster	Vanderbilt University	eric.bymaster@vanderbilt.edu
John	Brinker	Veolia	john.brinker@veolia.com
Chris	Perry	Veolia	christopher.perry@veolia.com
mark	hemming	Veolia	mark.hemming@veolia.com
Jesse	Douglas	Vicinity Energy	jesse.douglas@vicinityenergy.us
Gaurav	Lohiya	Walker Architects	glohiya@walker-arch.com
Joe	Walker	Walker Architects	jwalker@walker-arch.com
Chase	Robinson	Wells Fargo	chase.robinson@wellsfargo.com
Ashley	Chen	Wells Fargo Securities	ashley.m.chen@wellsfargo.com
Mohammed	Ismail	WSP	mohammed.ismail@wsp.com
Michael	Case	WSP USA Inc.	michael.case@wsp.com



University of Florida Central Energy Plant Project

Industry Day
September 2021





Today's Speakers

Chris Cowen

*Chief Financial Officer, **University of Florida***

Curtis Reynolds

*Vice President, Business Affairs, **University of Florida***

Colt Little

*Attorney / General Counsel's Office, **University of Florida***

Background

- **State-Supported Land-Grant Research University**
Founded in 1853
- Located on a contiguous 2,000 acre main campus in **Gainesville, Florida**
- Member of the State University System
- Recognized by the Carnegie Commission on Higher Education as **one of the Nation's leading research universities**
- Enrollment exceeding **57,800 students**
- Academically most highly ranked student body in the State of Florida



Offerings

- **16 Colleges** and more than 190 interdisciplinary research and education centers, bureaus and institutes
- Almost **100 Undergraduate and over 200 Graduate degrees**
- Professional post-baccalaureate degrees in law, dentistry, medicine, pharmacy, and veterinary medicine

University Ratings¹

Credit	Moody's	S&P	Fitch
Issuer	Aa1	-	AA+
Student Activity	Aa2	AA+	AA
Parking Facility	Aa2	AA-	AA-
Dormitory	Aa2	AA-	AA

Accolades

- **Ranked #5 among Public Universities** in the U.S. (US News and World Report 2021)
- The University's Sid Martin Biotechnology Incubator was ranked **"World's Best University Biotechnology Incubator"** (UBI 2013)
- Received a record **\$838 million in research awards** last fiscal year
- **Ranked 16th among public universities in research expenditures** (2019)
- **#2 among Best Value Public Colleges** (Forbes 2016)

¹As of September 28, 2021



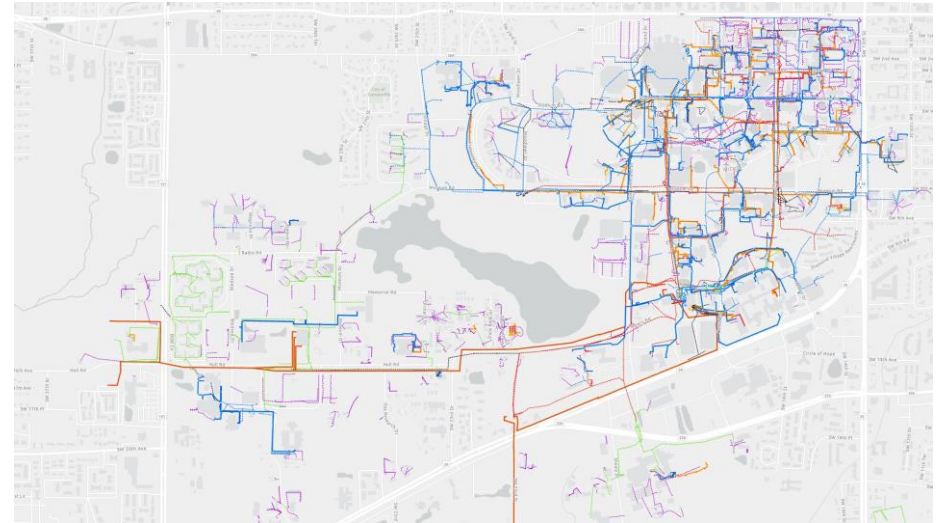
Duke Energy Facility

- Currently, the **University's central cogeneration facility** is owned and operated by Duke Energy Florida, LLC and is referred to as the "Duke Energy Facility"
- The Duke Energy Facility has been in operation for 25 years and is the **primary source of steam for the campus**
- The Facility is not directly connected to the University's electrical distribution system
- The University is a retail electricity customer of Duke Energy** and takes delivery for all electricity to the campus via grid-connected substations



Utility System

The University's education, research, agricultural, medical, athletic and business-related functions all rely on an intricate arrangement of energy generation, chillers, boilers, and utility distribution



Map above includes all delivery and return lines (piping or wires) for Electrical, Chilled Water, and Steam on campus



Background

- The Duke Energy Facility, the University's central cogeneration facility, is approaching the ***end of its service life and subsequent contract expiration***
- The infrastructure systems that produce chilled water and deliver thermal energy and electricity to the campus ***require upgrade and expansion***
- The overall existing utility system distribution capacity is becoming ***insufficient to meet the needs*** of the growing campus
- The campus has ***no source of islandable power generation*** to support critical operations in the event of a grid outage failure

In response, the University has invested the past three years exploring numerous infrastructure alternatives and formulating a strategy to develop the next generation of campus utilities to meet the needs of the University

Scope of Work

DBFOM: Central Energy Plant

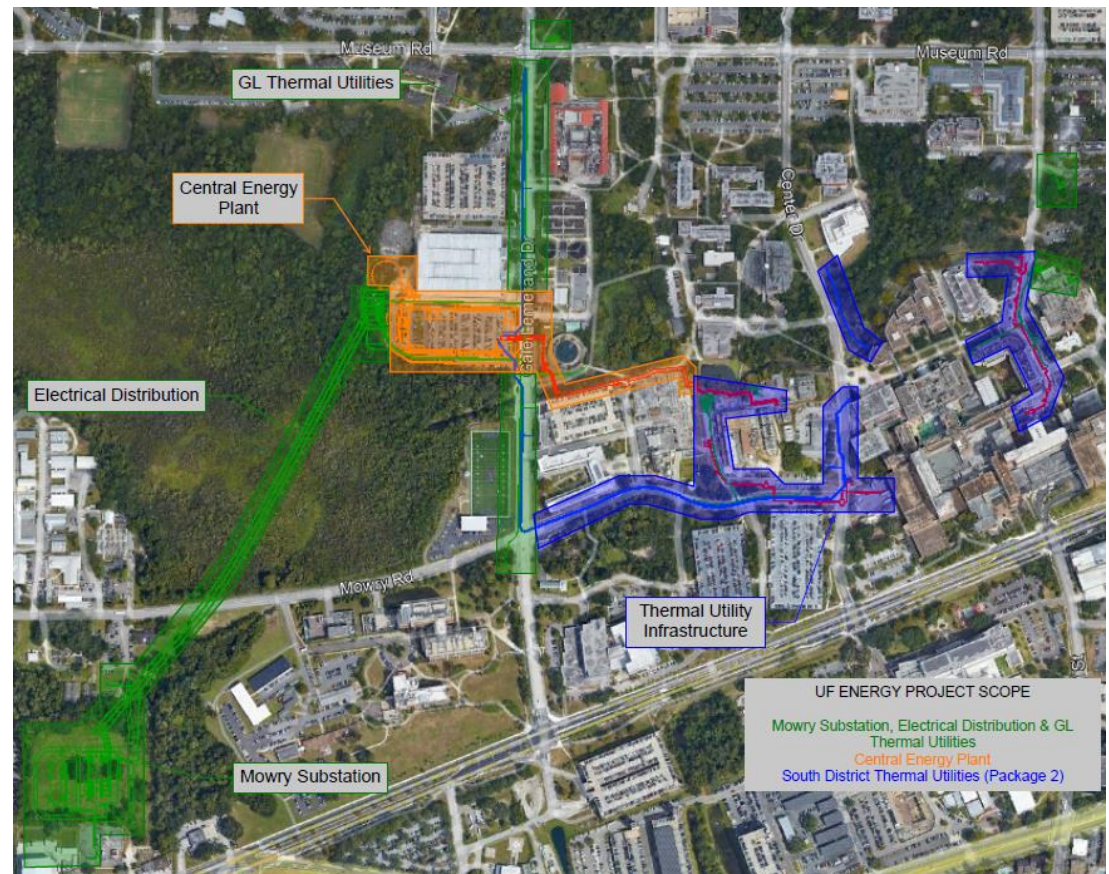
- Steam (230,000 PPH)
- Combined Cycle CHP (50 MW)
- Chilled Water (25,000 tons)
- Connection to main campus steam and chilled water piping
- New Energy Plant Building

B&F: Thermal Piping Distribution Loop **("Thermal Utility Infrastructure")**

- New direct bury chilled water distribution piping
- Steam and condensate return distribution pipes

B&F: Mowry Road Substation **("Electrical Distribution")**

- Three new 69kV stepdown transformers and switchyard
- Electrical and communications distribution feeders
- Chilled water distribution piping

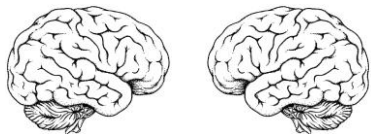


The Project design should ensure energy resilience for the campus while advancing strategic priorities of the University



Achieving Steam Independence

Provide Steam for all of campus by 2027



Academic Collaboration

Interactive and dynamic programs to provide a living laboratory for all students



Achieving Sustainability Goals

Project will further reduce the University's overall carbon footprint by 25%



Inclusive Culture

Supports the University's commitment to diversity, equity and inclusion



Balancing Affordability with Future Innovation

Efficient pricing and ongoing operational synergies while allowing for future technological innovation



Cutting Edge Technology

Inclusion of AI and state-of-the-art diagnostic tools to maximize efficiency

Carbon and Sustainability Goals

- Presidential-level goal to be a carbon neutral campus since 2006
- The UF Climate Action Plan 2.0 will be released in Fall 2021
- The University completes annual UF Greenhouse Gas Inventory for the University's main campus operations

Immediate Carbon Reduction

25% Reduction in the University's Overall Carbon Footprint

- On an annual basis, the **reduction of carbon footprint** from the CEP is the equivalent of shifting 18,000 US homes to zero-emission electricity
- Emissions reductions come from **improving efficiency** with the University's steam supply, **shifting ~60% of campus electricity** from the electricity grid, generating electricity using a highly efficient CHP system, and **reducing the distance** electricity will need to travel to arrive where needed

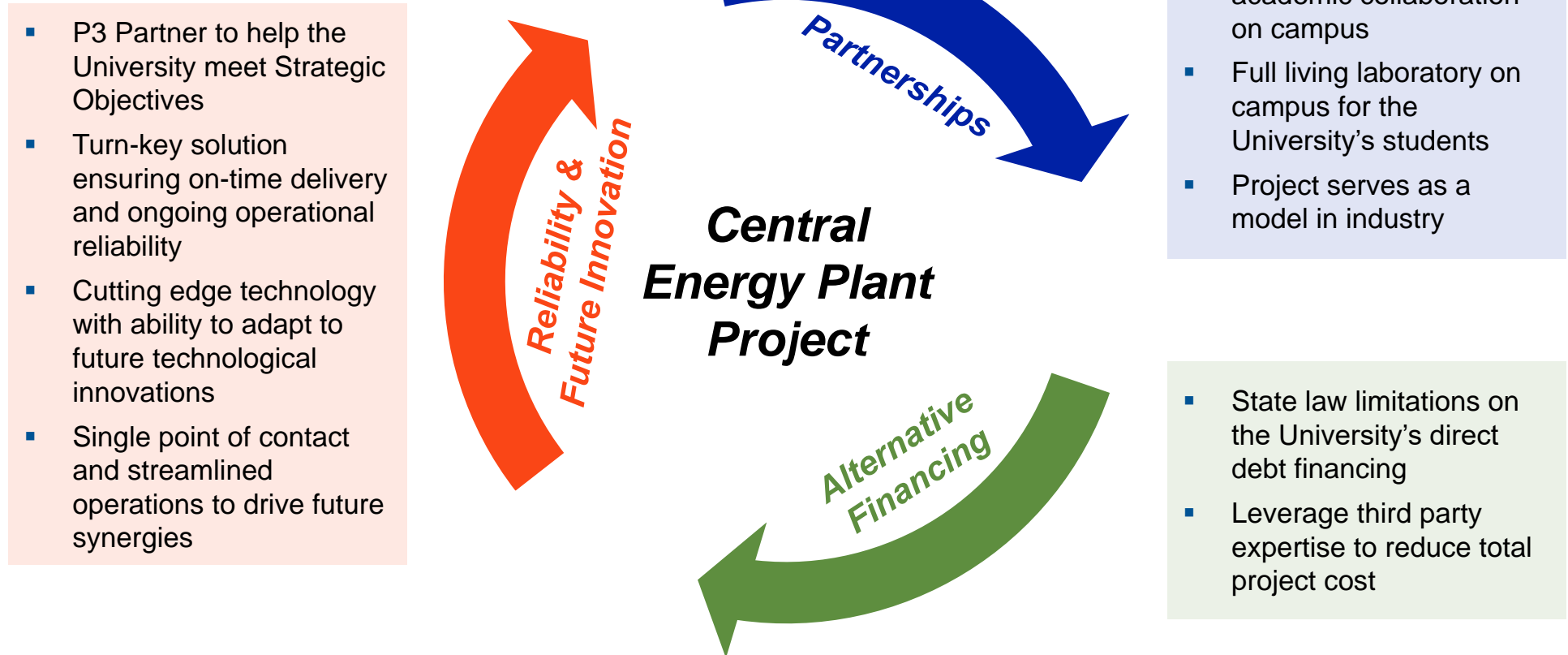


Mitigating Long-Term Implications

- The University has made a commitment to develop the CEP for present and future campus needs
- The gas turbines may have the potential to **adapt to burn more environmentally friendly fuel sources in the future**

Key Drivers for Utilizing a P3 Delivery Model

After extensive diligence and review, the University has elected to pursue a P3 delivery model vs. self-delivery



The University's Staff has been, and will continue to be, in active dialogue with the Trustees and Board of Governors

UF Anticipated P3 Structure

UNIVERSITY of FLORIDA

- The Developer will be responsible for **designing, building, financing, operating and maintaining** (“DBFOM”) the Central Energy Plant
- The Developer will be responsible for **building and financing** the thermal distribution piping loop and Mowry Road Substation
- The Developer is expected to be compensated via an **Availability Payment-like mechanism** from the University
 - **Central Energy Plant scope will include performance based deductions and KPI compliance requirements throughout the term of the agreement**



Overview of Procurement Process

ITN Phase I

- Issuance of ITN Phase I
- Evaluation of SOQs
- Development of a short list of 3-4 firms



ITN Phase II

- Issuance of initial draft ITN Phase II
- Evaluation of comments from shortlisted firms
- Issuance of final ITN Phase II
- Proposal submissions and evaluation
- Negotiation of Final Agreement



Approval of Final Agreement

Please reach out to the following email address with any questions:

UFCEP-Project@ufl.edu

Anticipated Project Timeline



Item	Date
Issuance ITN Phase I	September 9, 2021
Industry Day	September 28, 2021 at 1:30 p.m.
ITN Questions Deadline	October 1, 2021
ITN Questions Response Date	October 15, 2021
SOQ Submission Deadline and Opening of SOQs	November 10, 2021 at 2:00 p.m.
Announcement of Shortlisted Proposers	December 2021
Issue Initial Draft ITN Phase II	January 2022
Issue Final ITN Phase II	June 2022
Proposal Submission Deadline	September 2022
Selection of Developer	October 2022
Financial Close	Early 2023



The University will not be bound by, and Respondents shall not rely on, any oral communication or representation regarding this ITN Phase I or any written communication except to the extent that it is contained in this ITN Phase I or in an addendum to this ITN Phase I

- An addendum to the ITN will be issued by October 15th, that will include:
 - Responses to questions received
 - List of registered attendees, including email addresses
- Any written ITN questions (using Form E) are due October 1st to UFCEP-Project@ufl.edu
- Responses will be posted to UF's Procurement.ufl.edu website by October 15th



Chris Cowen

Chief Financial Officer

Alan West

Assistant Vice President and Treasurer

Curtis Reynolds

Vice President, Business Affairs

Mark Helms

Assistance Vice President, Facilities Services

Colt Little

Attorney / General Counsel's Office

Marilena Ceobanu

Director, Finance

Chris Whitehurst

Assistant Director, Finance

Jennifer Meisenhelder

Director of Utilities, Thermal Systems

Gregg Clarke

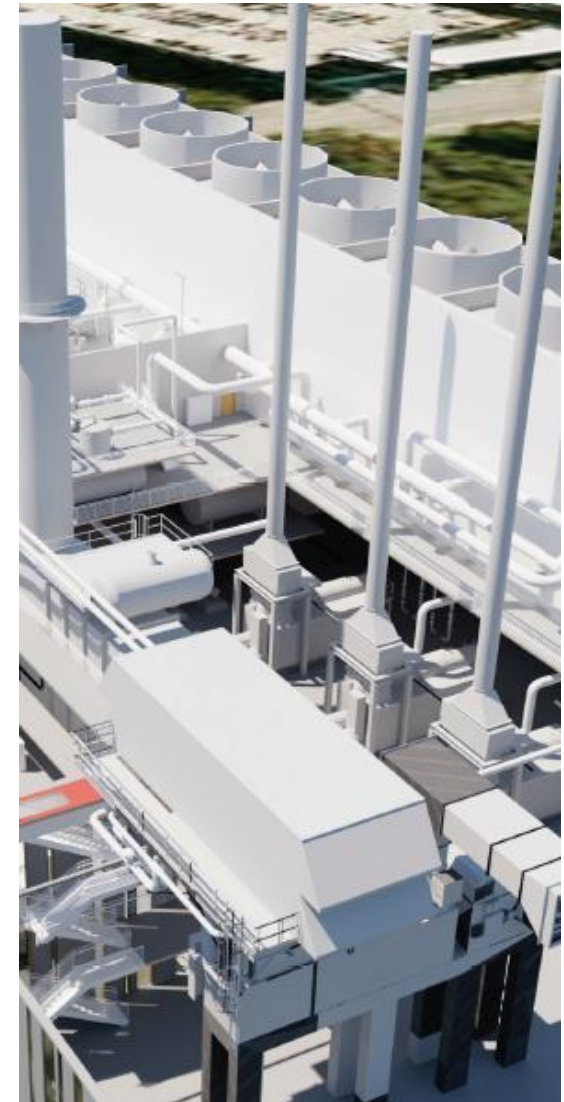
Senior Director, Operations

Dante Reyes

Senior Project Controls Manager

Charles Kammin

Assistant Director, Electric Systems



Financial Advisor
Goldman Sachs

Technical Advisor
Jacobs

Legal Advisors
Ballard Spahr
GBW Legal
Bryant Miller Olive

